



Friends™

41728





LEGO.com/sustainable-packaging



BUILDER

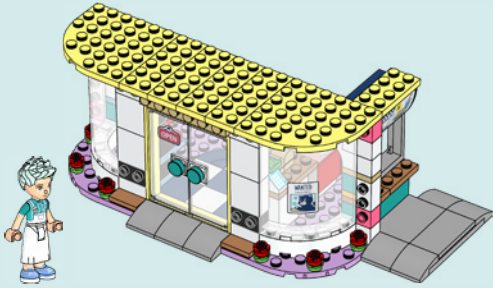


Apple and the Apple logo are trademarks of Apple Inc., registered in the U.S. and other countries and regions. App Store is a service mark of Apple Inc. Google Play and the Google Play logo are trademarks of Google LLC. Tencent and the Tencent logo are trademarks of Tencent Inc.

Q [LEGO.com/devicecheck](https://www.lego.com/devicecheck)

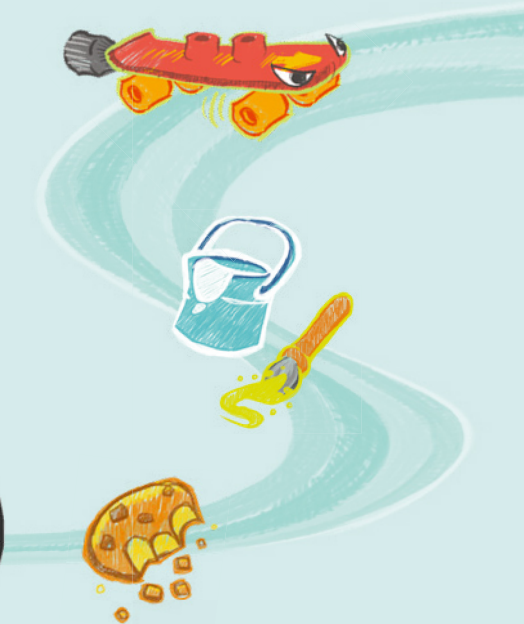
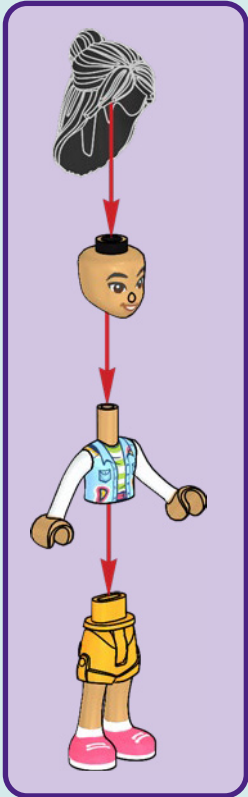
EN Ask parents' permission before going online | **DE** Eltern um Erlaubnis bitten, bevor du online gehst | **FR** Demande l'autorisation d'un parent avant d'aller en ligne | **IT** Chiedi il permesso ai tuoi genitori prima di andare online | **ES** Pídeles permiso a tus papás antes de conectarte a Internet | **PT** Peça autorização aos pais antes de acederes online | **JA** オンラインになる前に ほかの方のきよかもをもらおう | **ZH** 上网前应先征得父母的同意 | **KO** 온라인 접속 전에 보호자 동의가 필요합니다 | **RU** Спроси разрешения у родителей, прежде чем заходить в интернет | **PL** Poproś rodziców o zgodę, zanim wejdiesz do Internetu | **CS** Než půjdeš na internet, požádej rodiče o svolení | **SK** Skôr než pôjdeš na internet, vypýtaj si povolenie od rodičov | **HU** Kérj szülői engedélyt, mielőtt online csatlakoznál! | **RO** Cere permisiunea părinților înainte de a te conecta online | **BG** Поискайте разрешение от родител, преди да влезете онлайн | **LV** Pirms došanās tiešsaistē palūdz atļauju vecākiem | **ET** Enne Interneti kasutamist küsi vanematelt luba | **LT** Prieš prisijungdami prie interneto, atsiklauskite tėvų

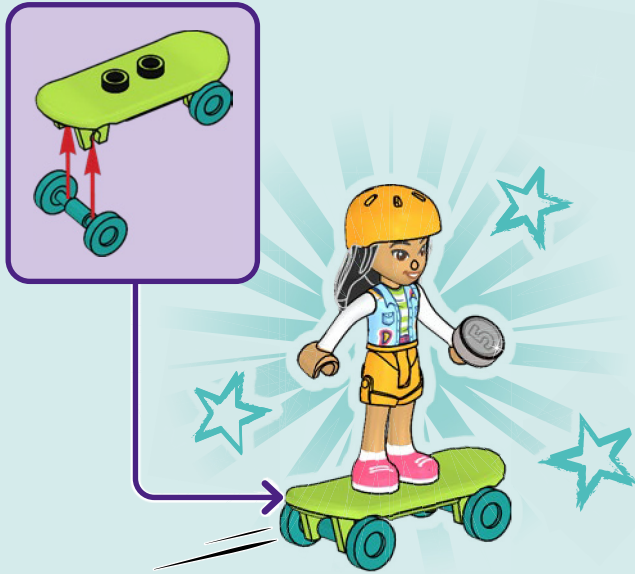
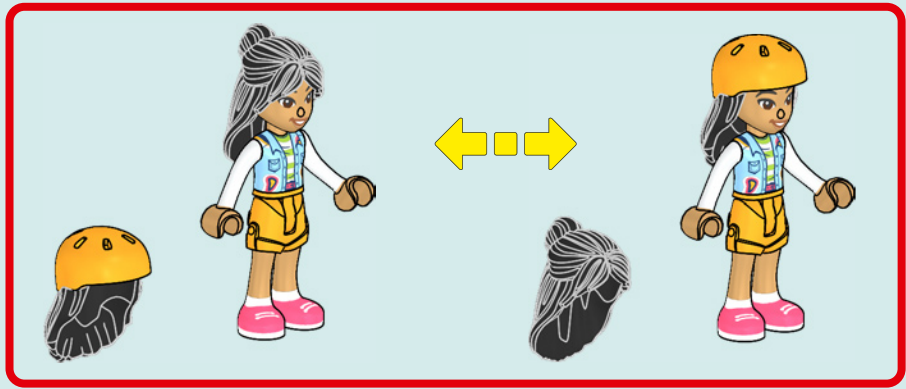




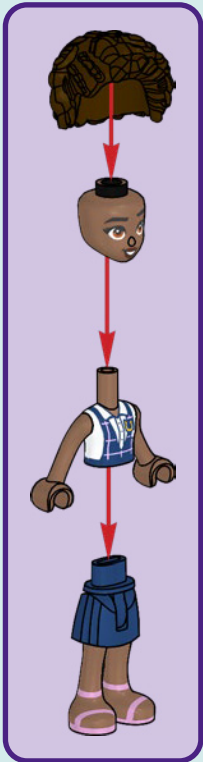


LIANN

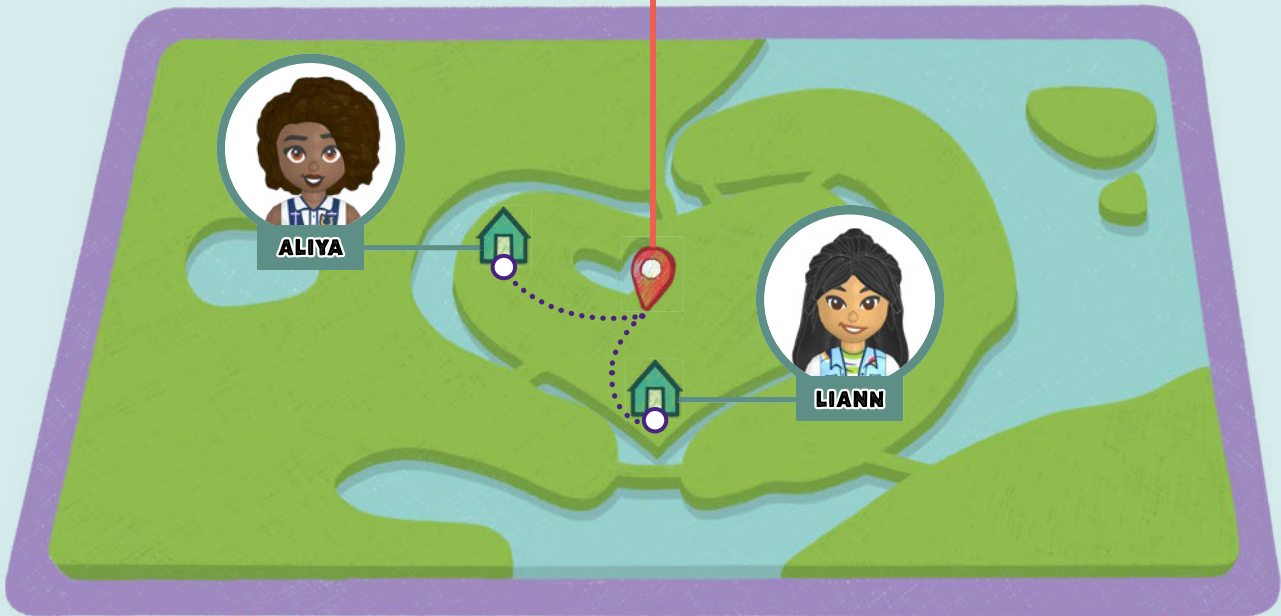


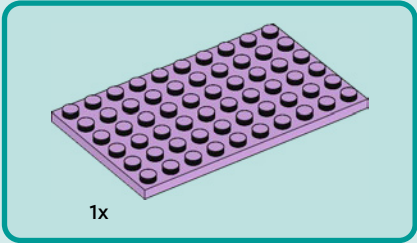
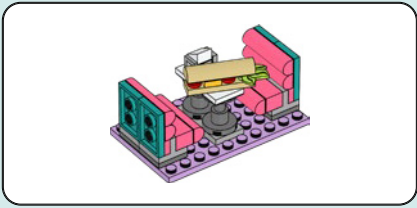


ALIYA



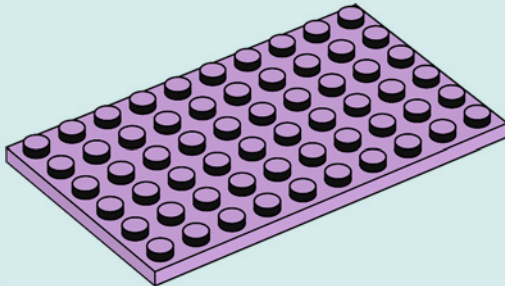


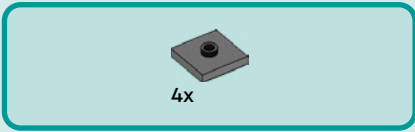




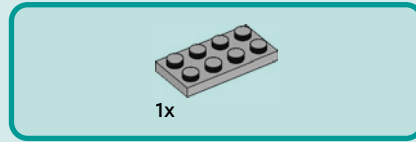
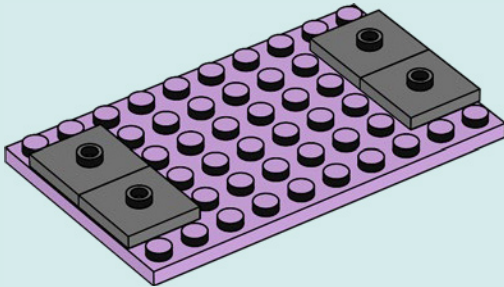
1x

1

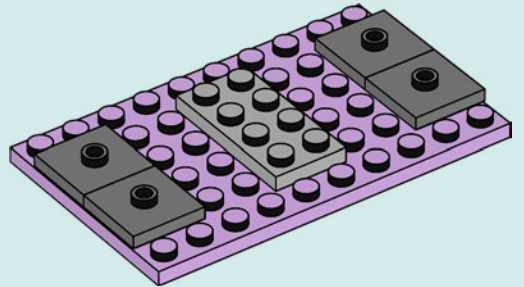




2



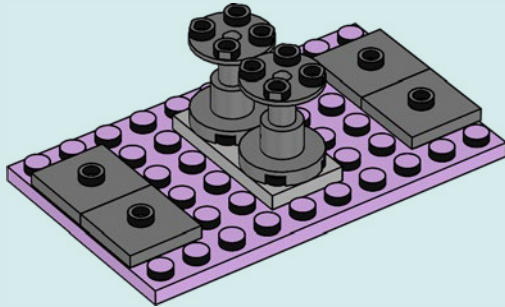
3

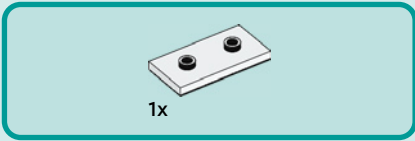




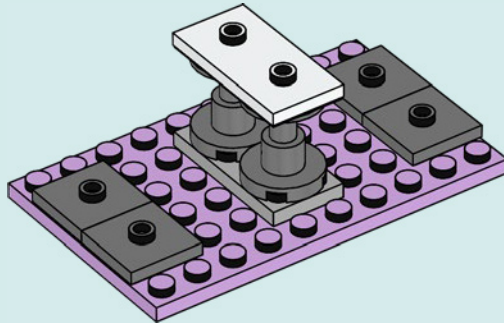
2x

4



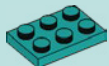


5





2x

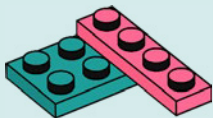


1x



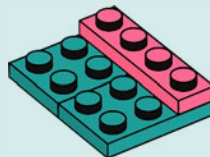
1x

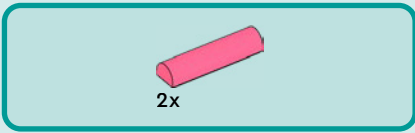
6



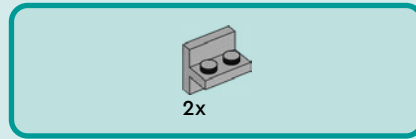
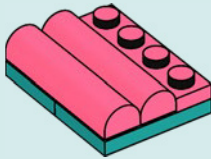
1x

7

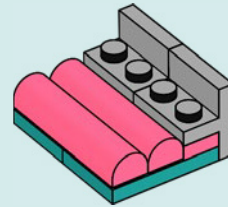




8



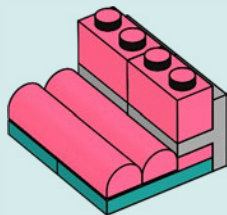
9





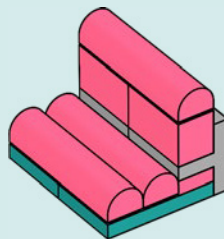
2x

10

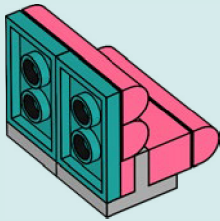


1x

11

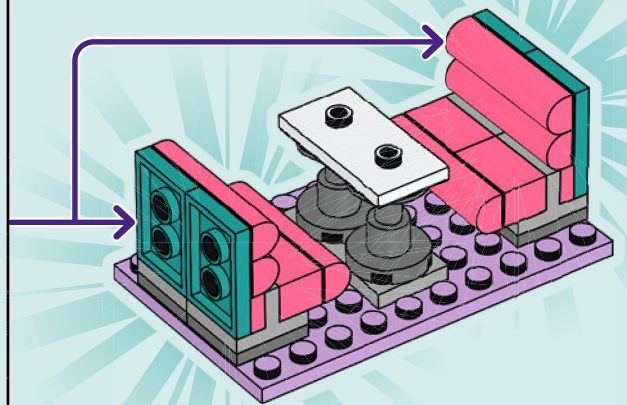


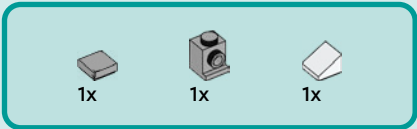
12



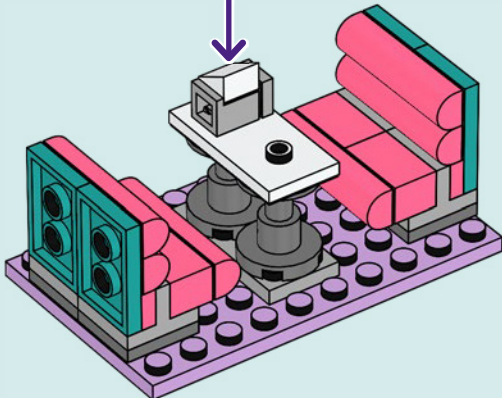
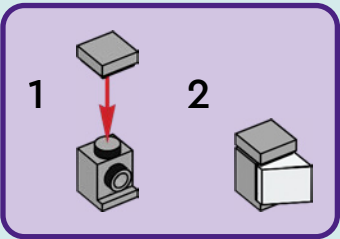
2x

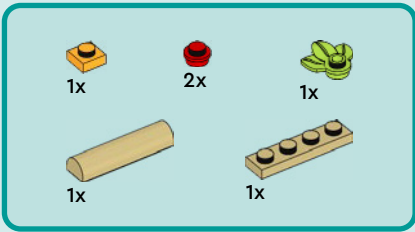
13



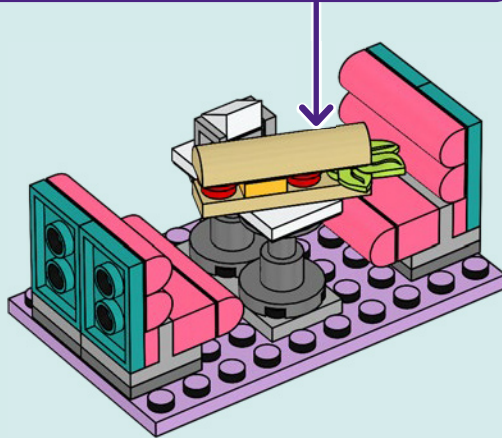
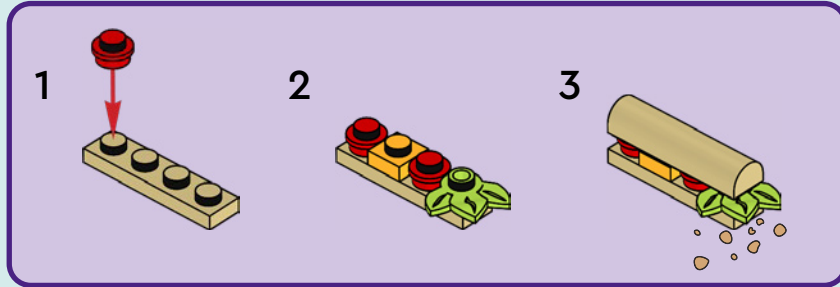


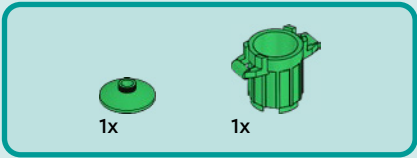
14



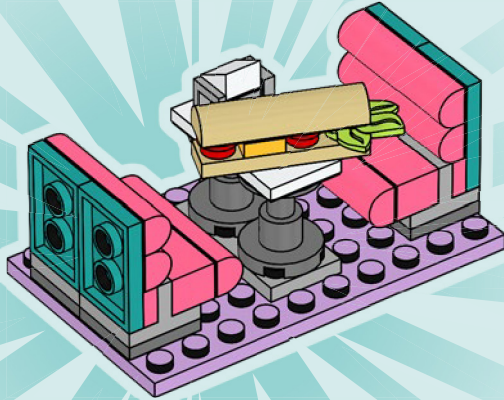
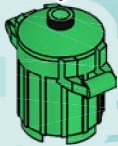
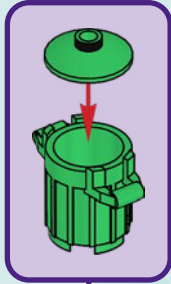


15



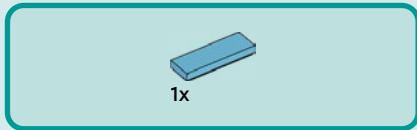
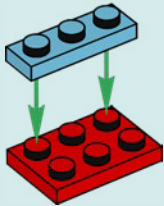


16

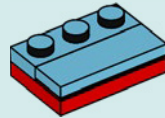




1



2





4x

3

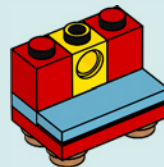
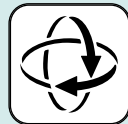


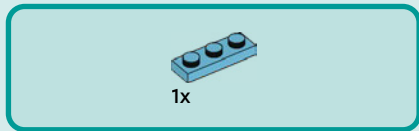
2x



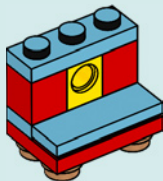
1x

4

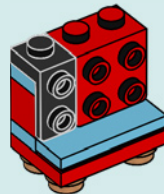




5



6



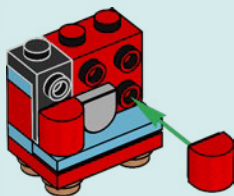


1x



2x

7

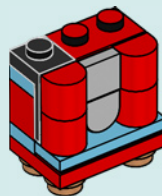


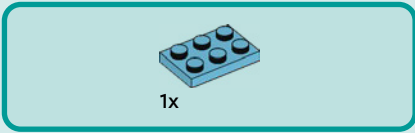
1x



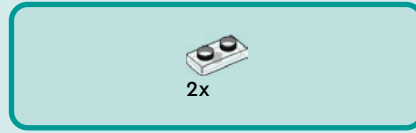
2x

8

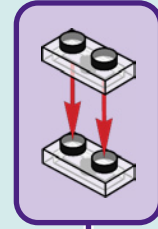




9



10





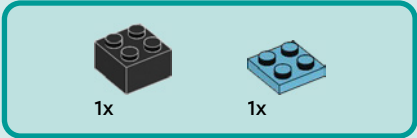
1x



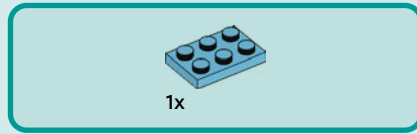
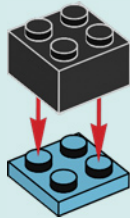
2x

11

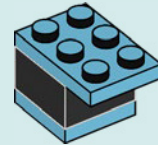




1



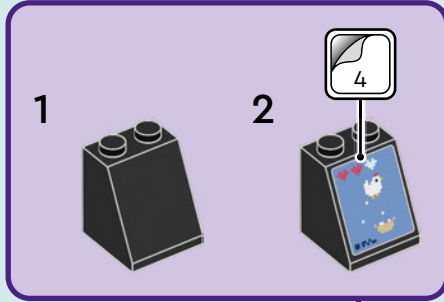
2





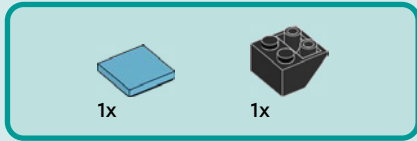
1x

3

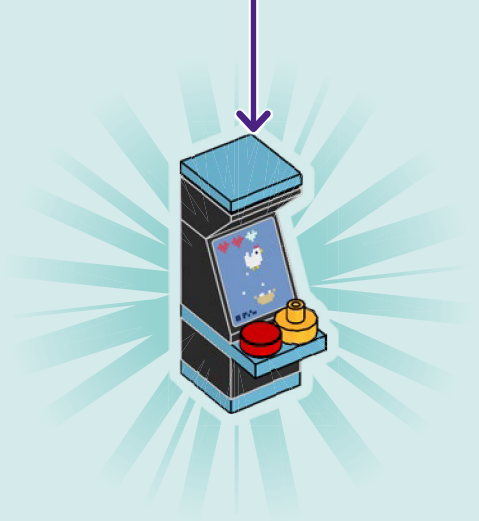
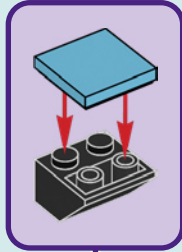


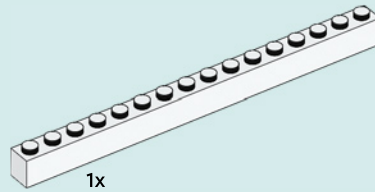
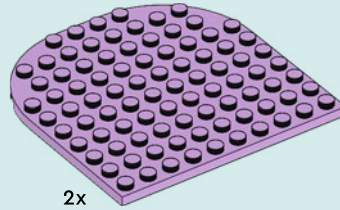
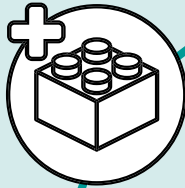


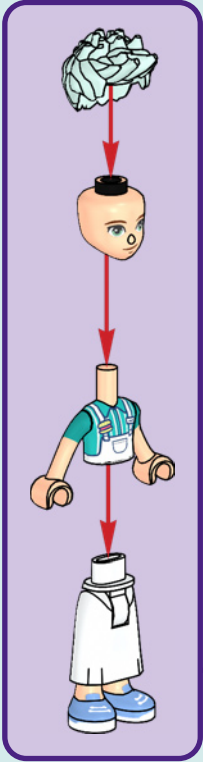
4



5

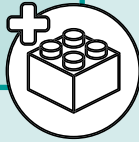
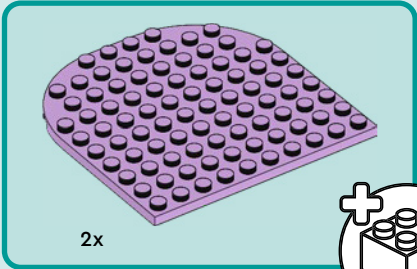




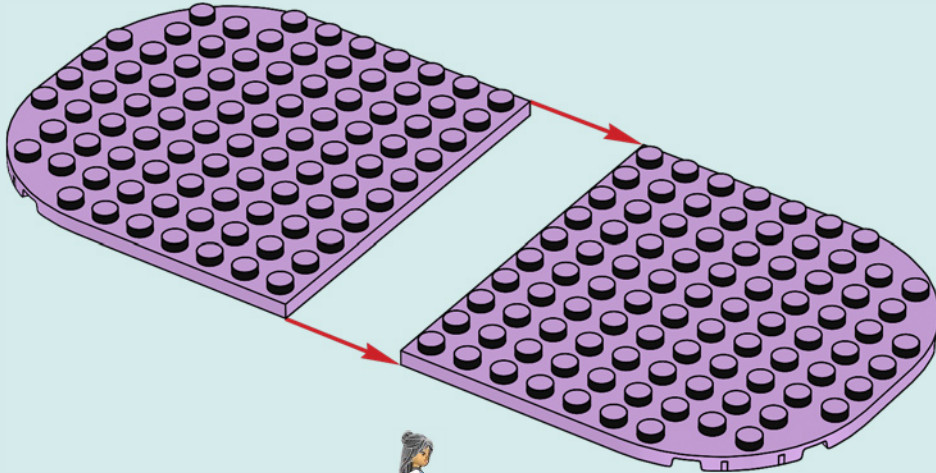


CHARLI





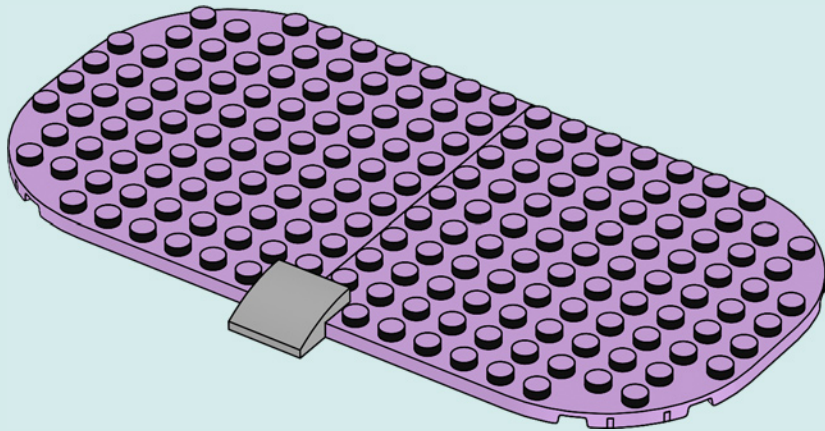
1





1x

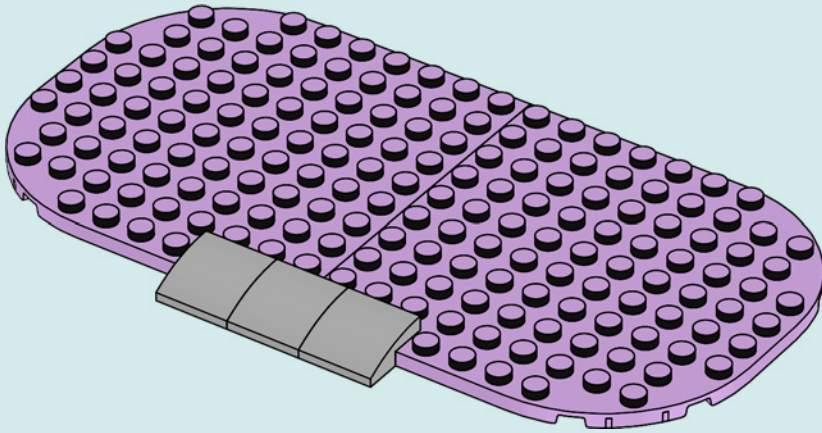
2

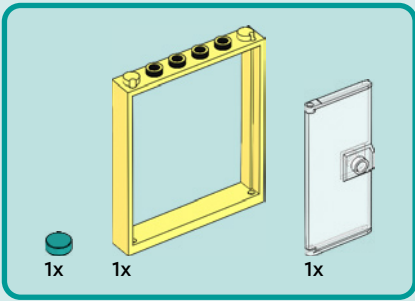




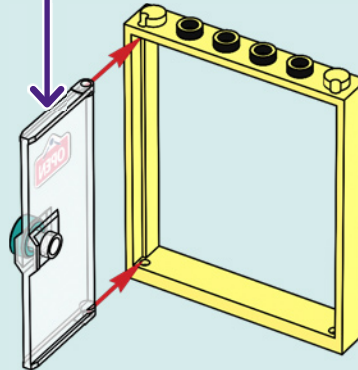
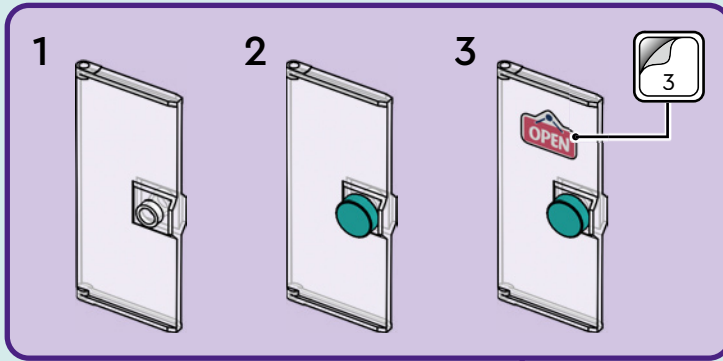
2x

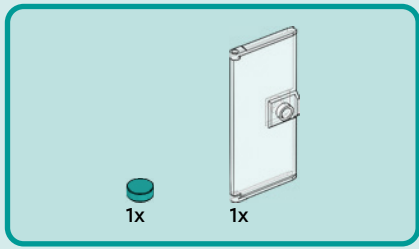
3



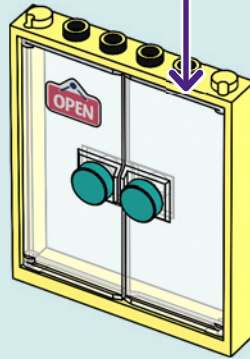
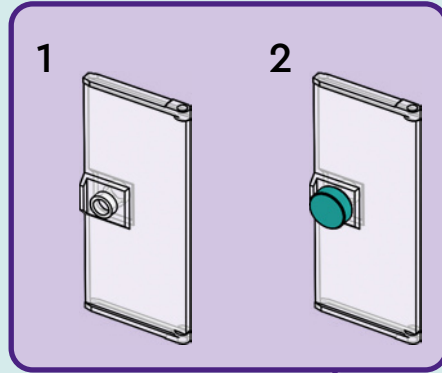


4

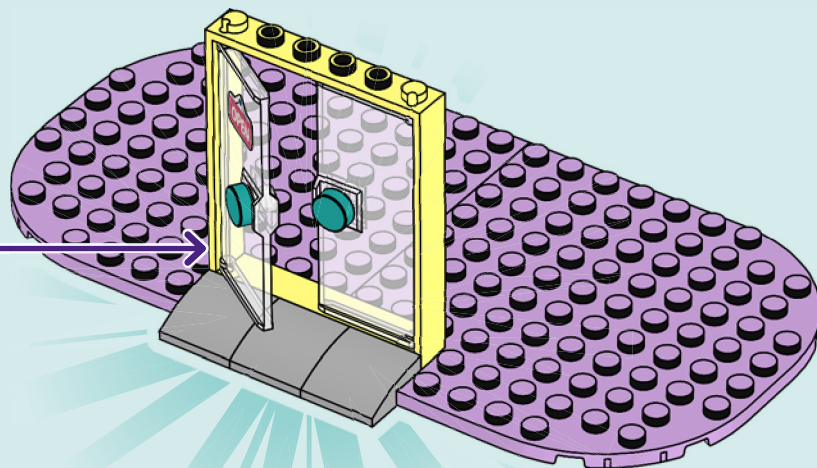




5



6



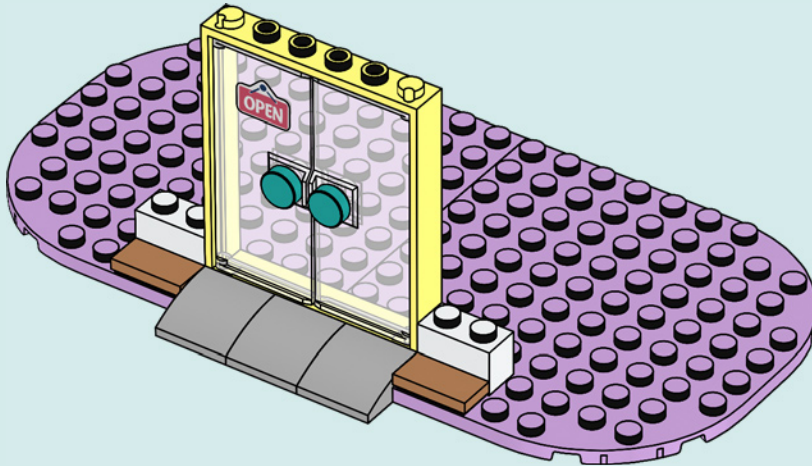


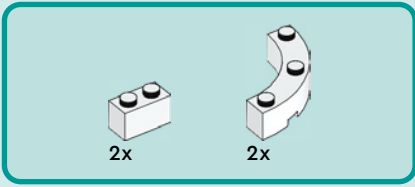
2x



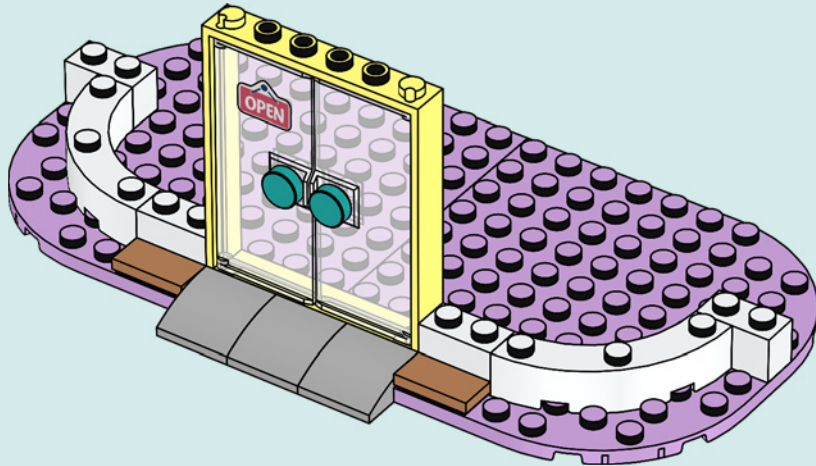
2x

7





8



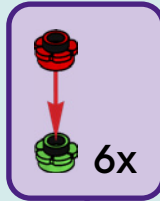


6x



6x

9



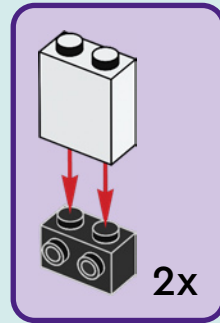


2x



2x

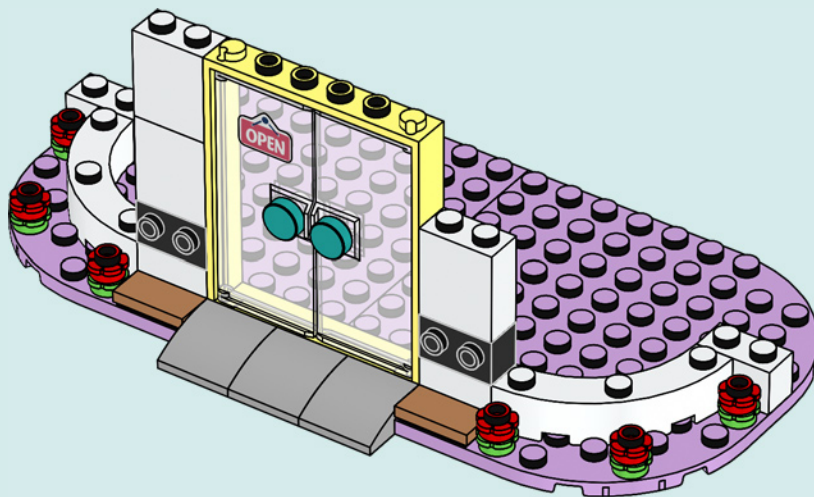
10

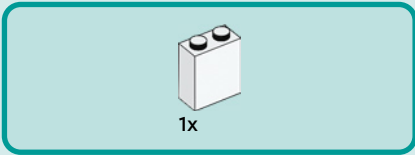




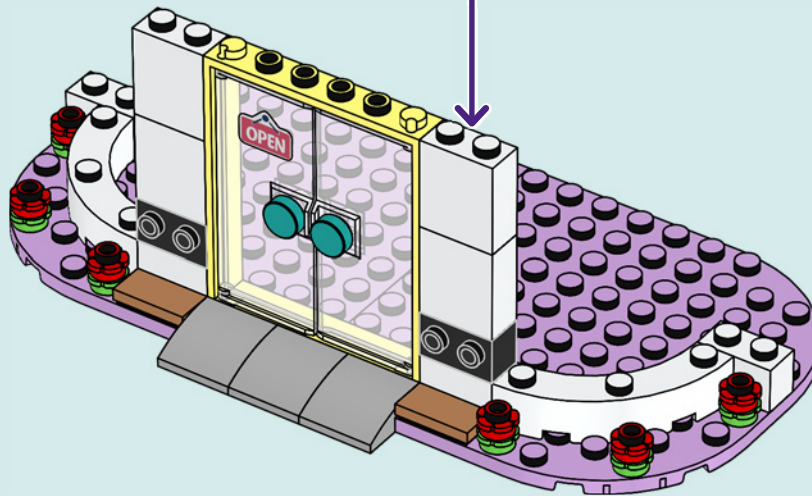
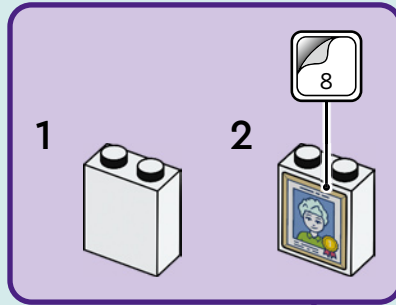
1x

11





12



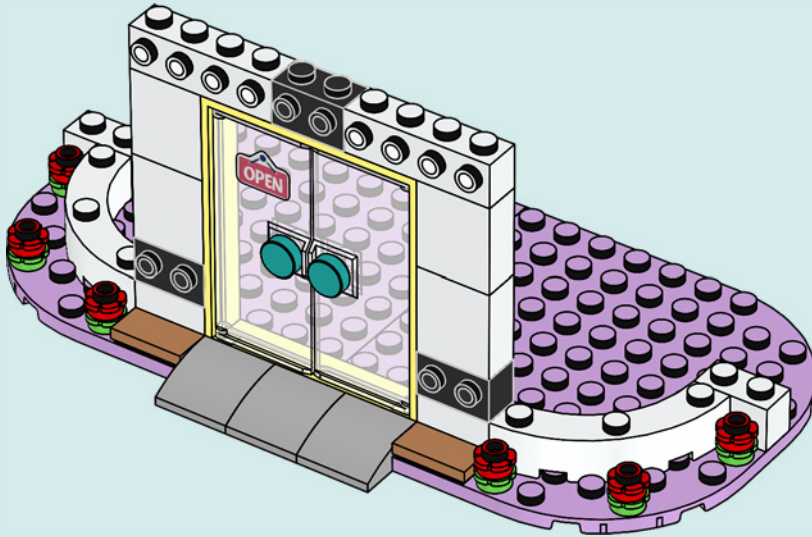


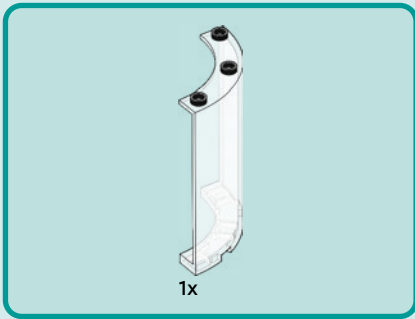
2x



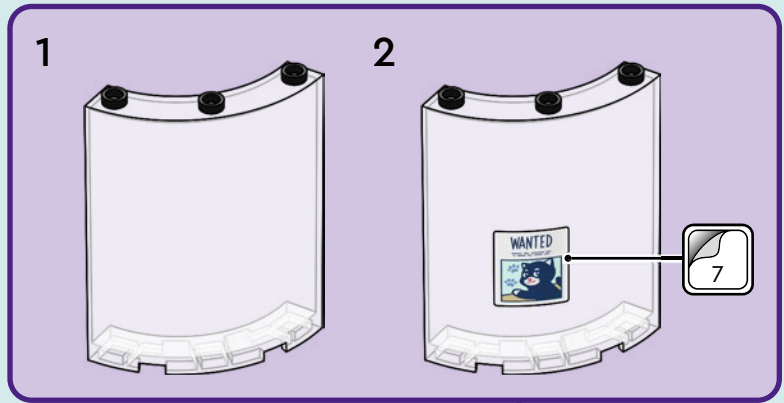
1x

13





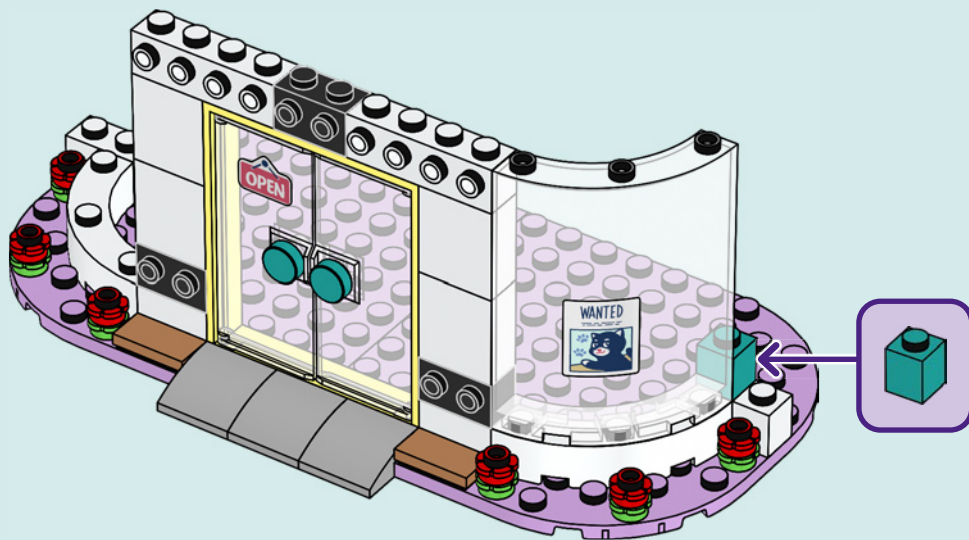
14

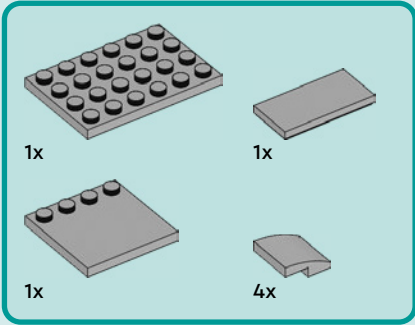
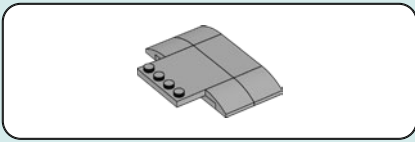




1x

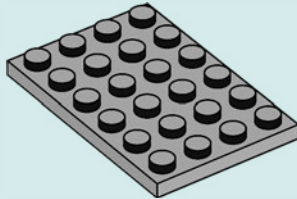
15



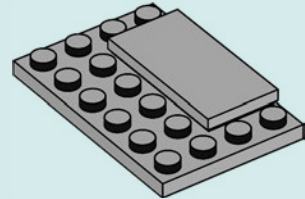


16

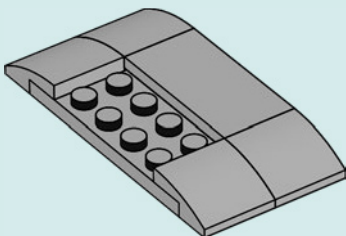
1



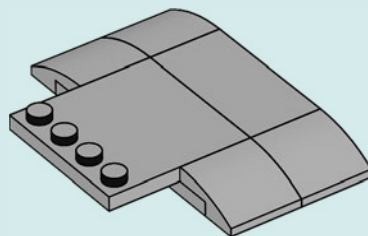
2

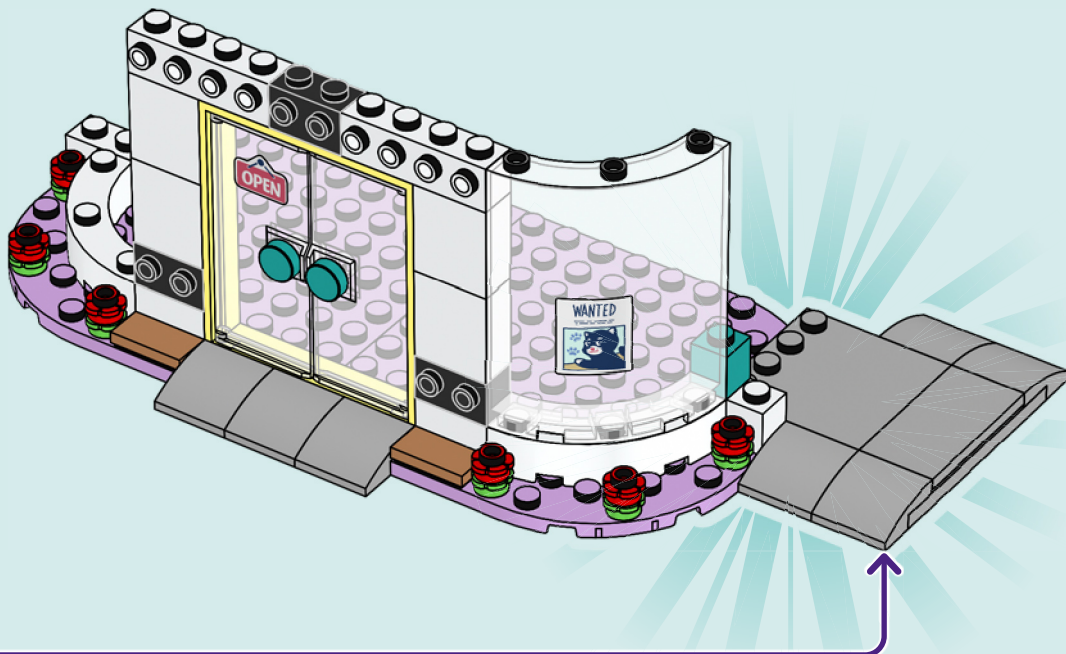


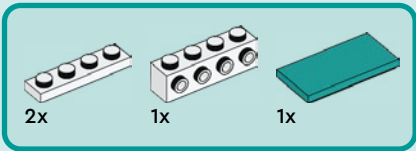
3



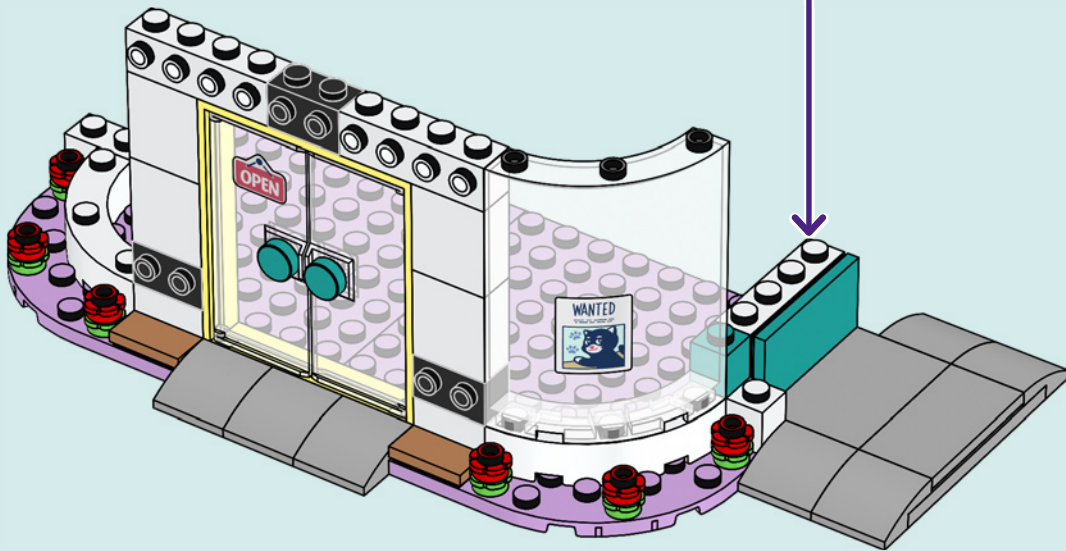
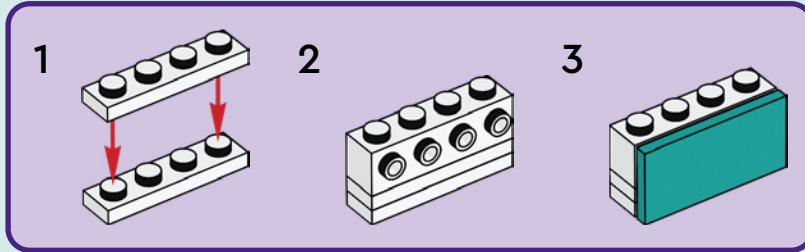
4







17



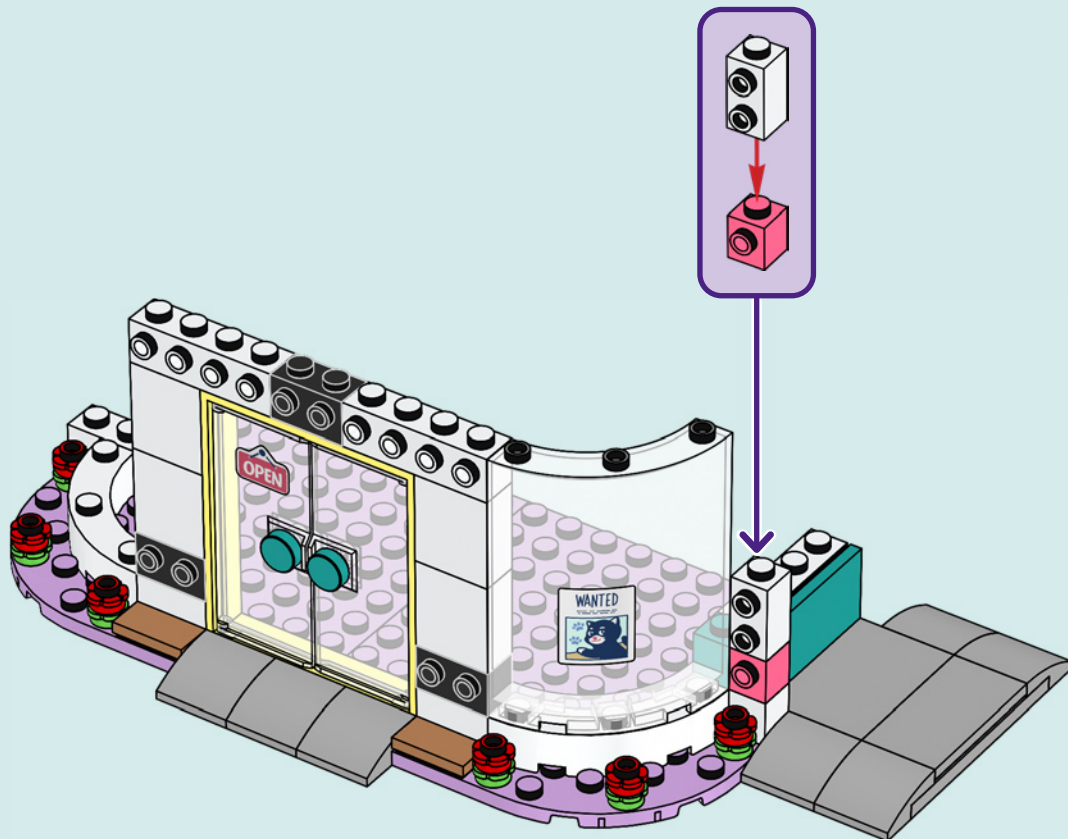


1x



1x

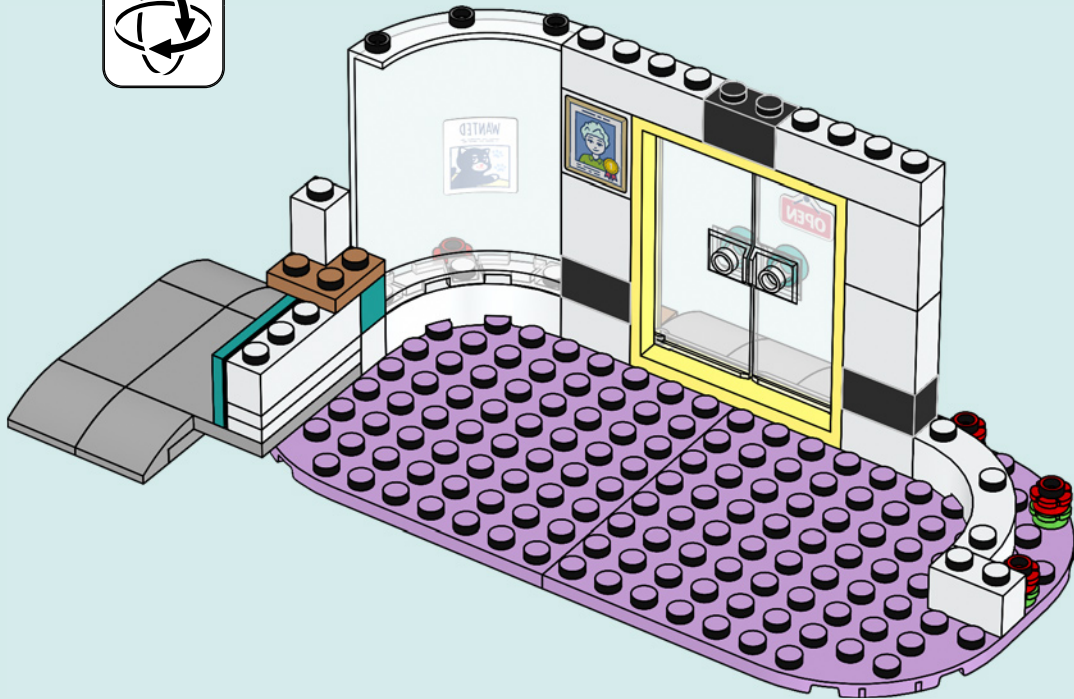
18





1x

19



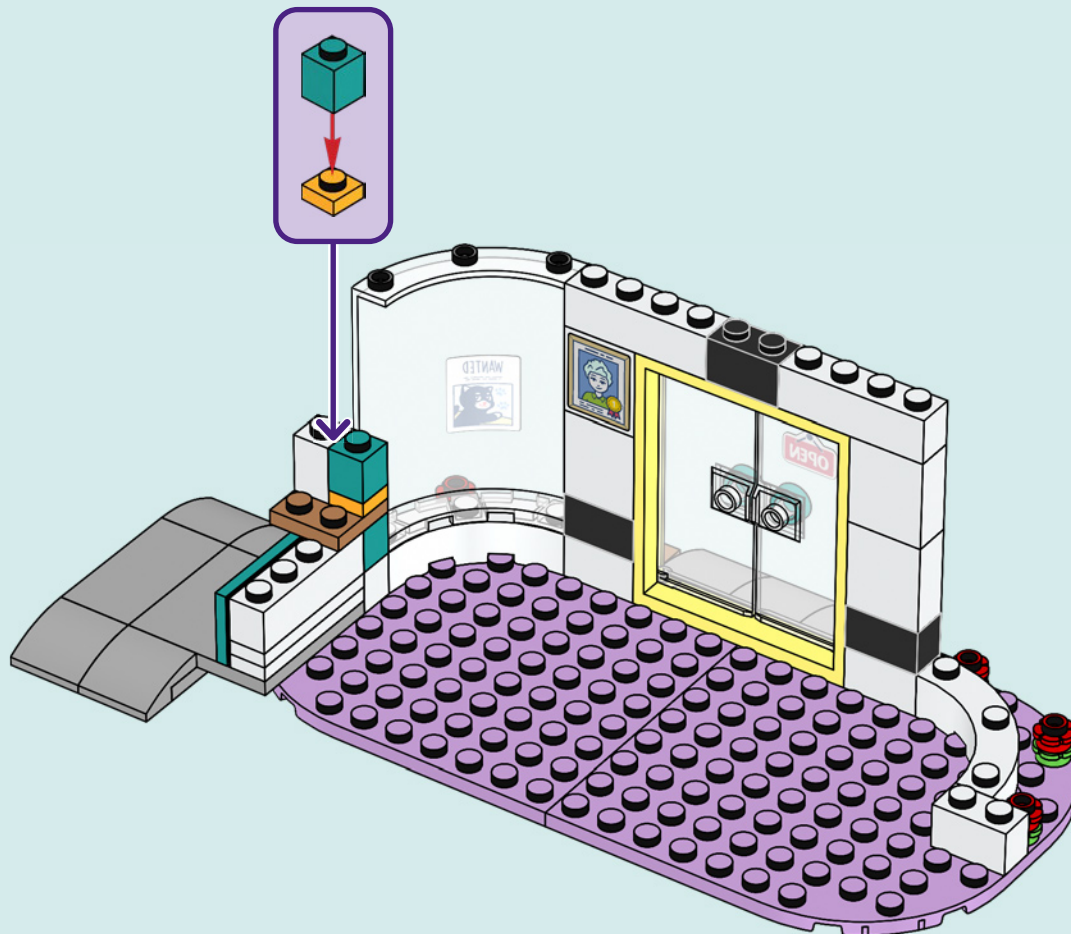


1x



1x

20



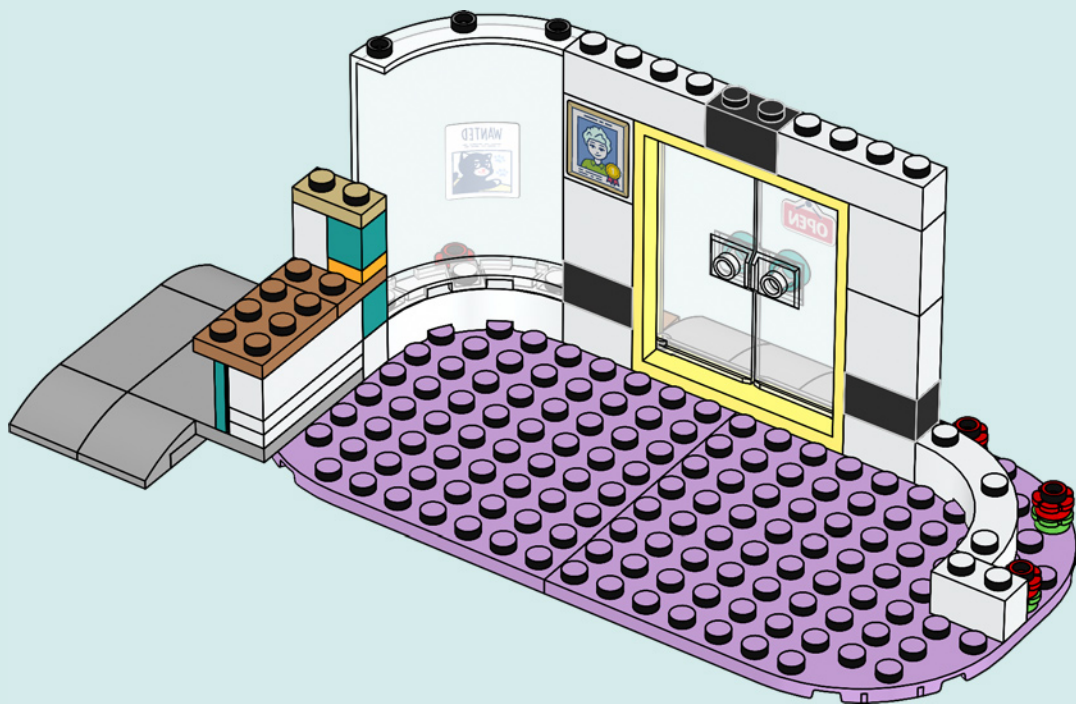


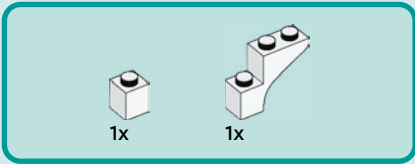
1x



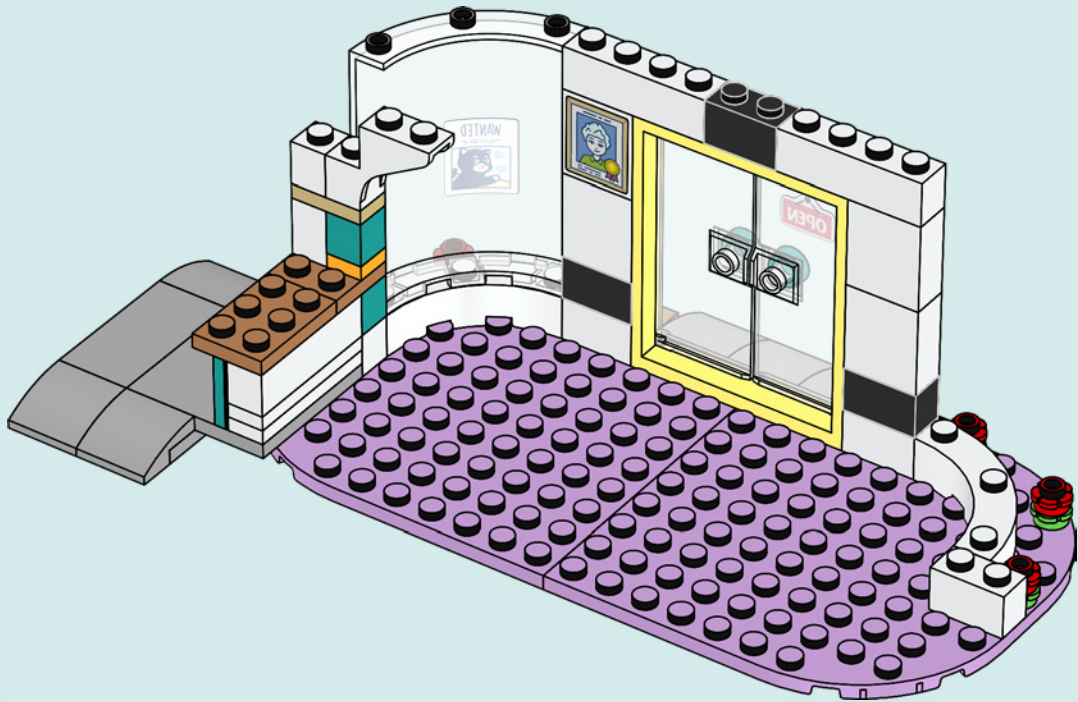
1x

21





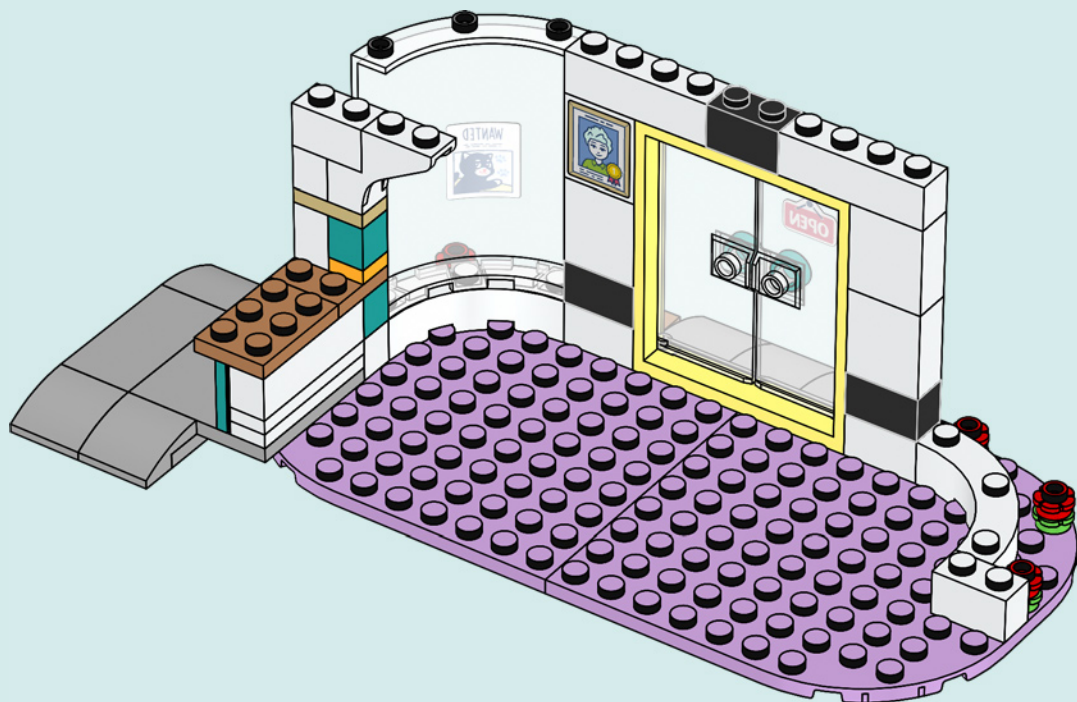
22

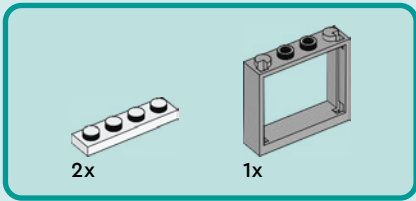




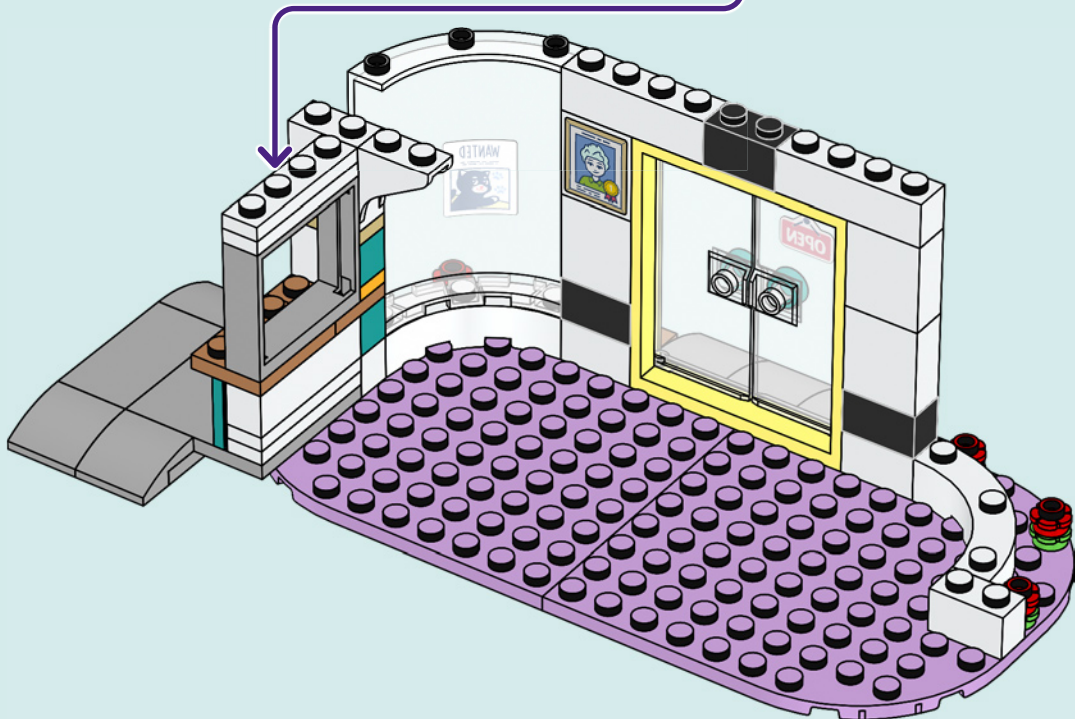
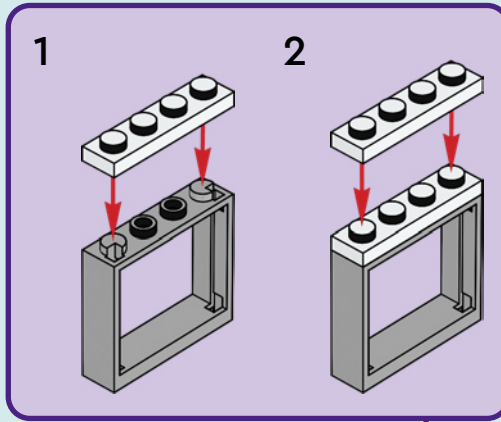
1x

23





24





1x

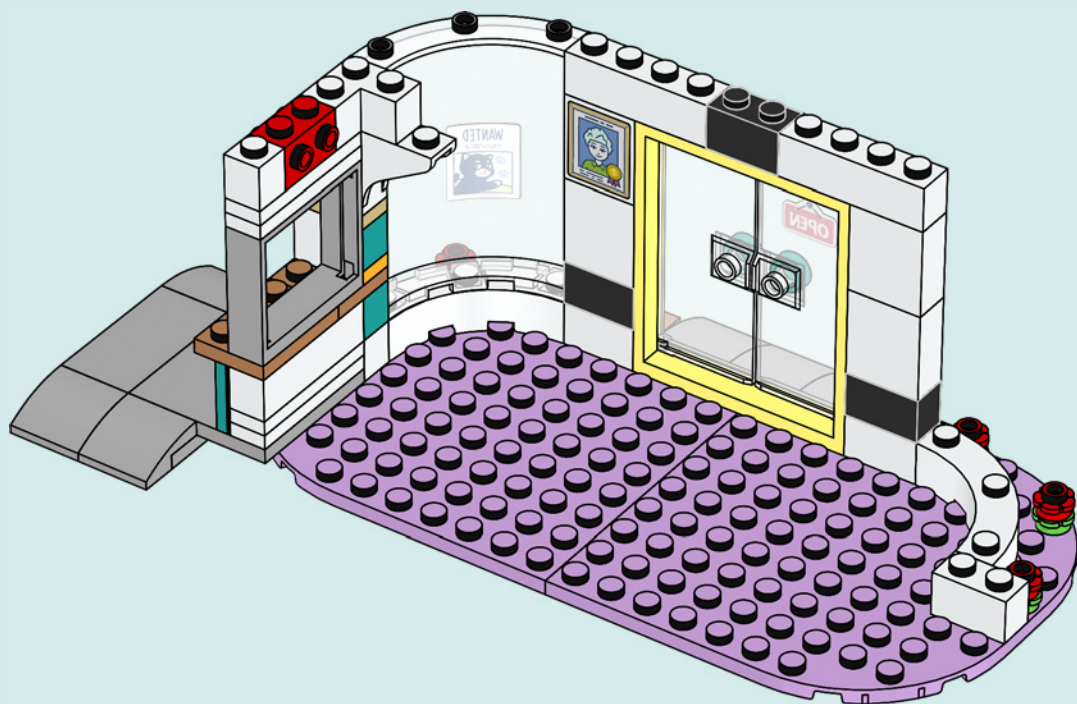


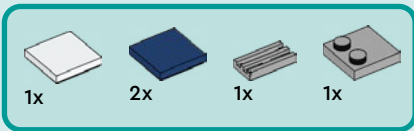
1x



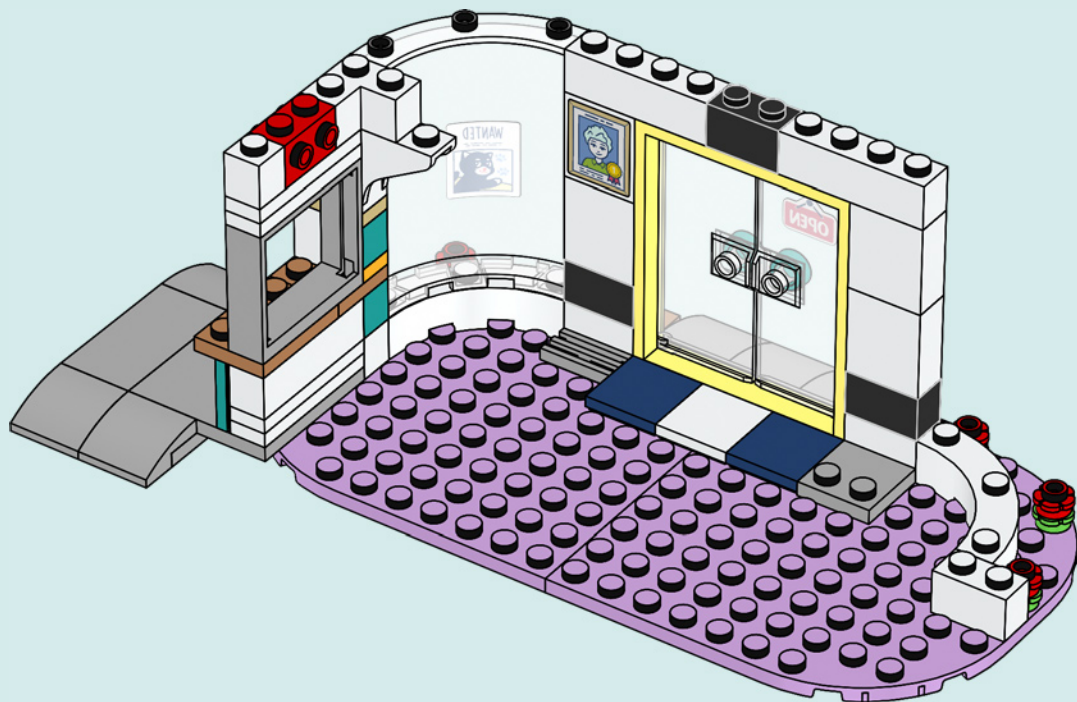
1x

25





26



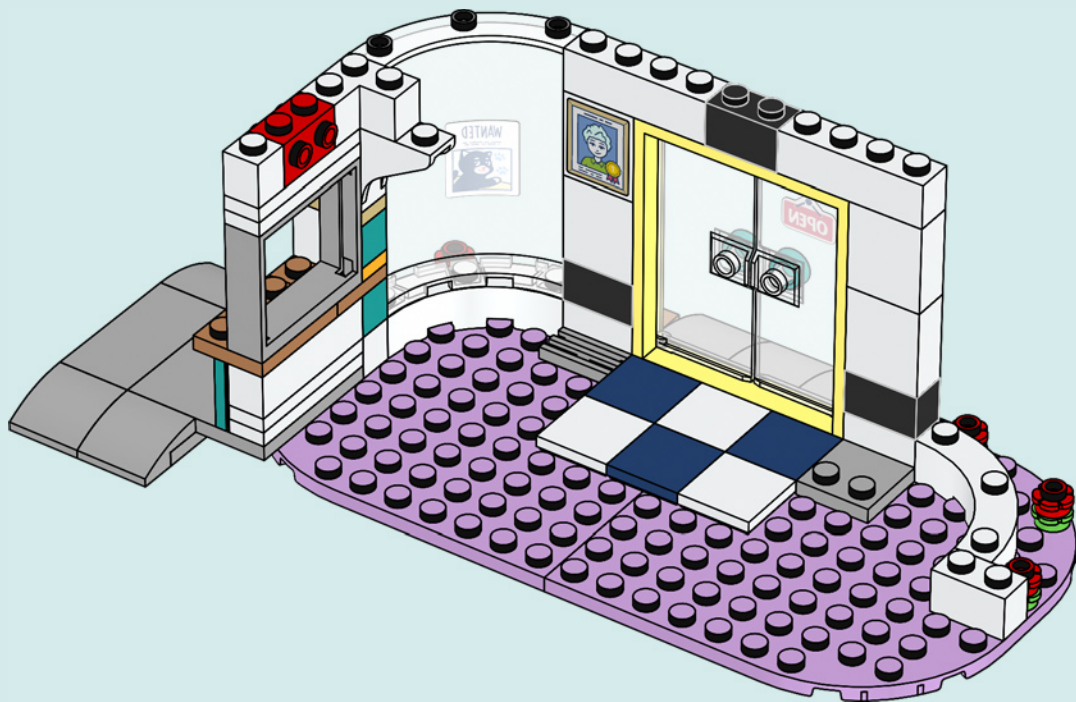


2x



1x

27



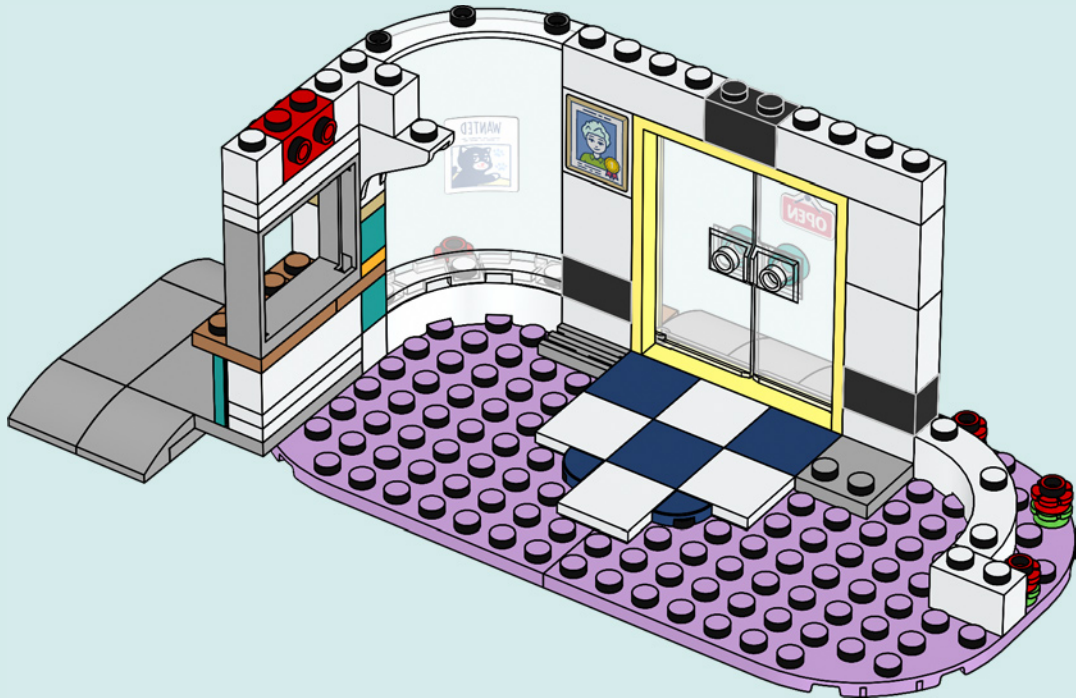


1x



2x

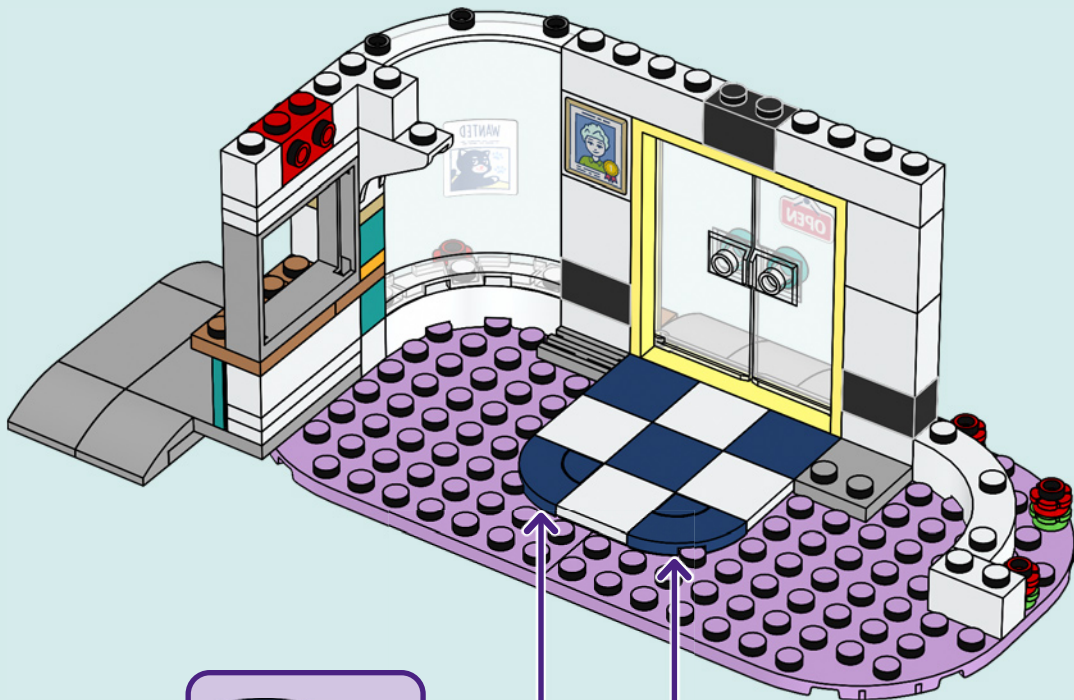
28





2x

29



2x



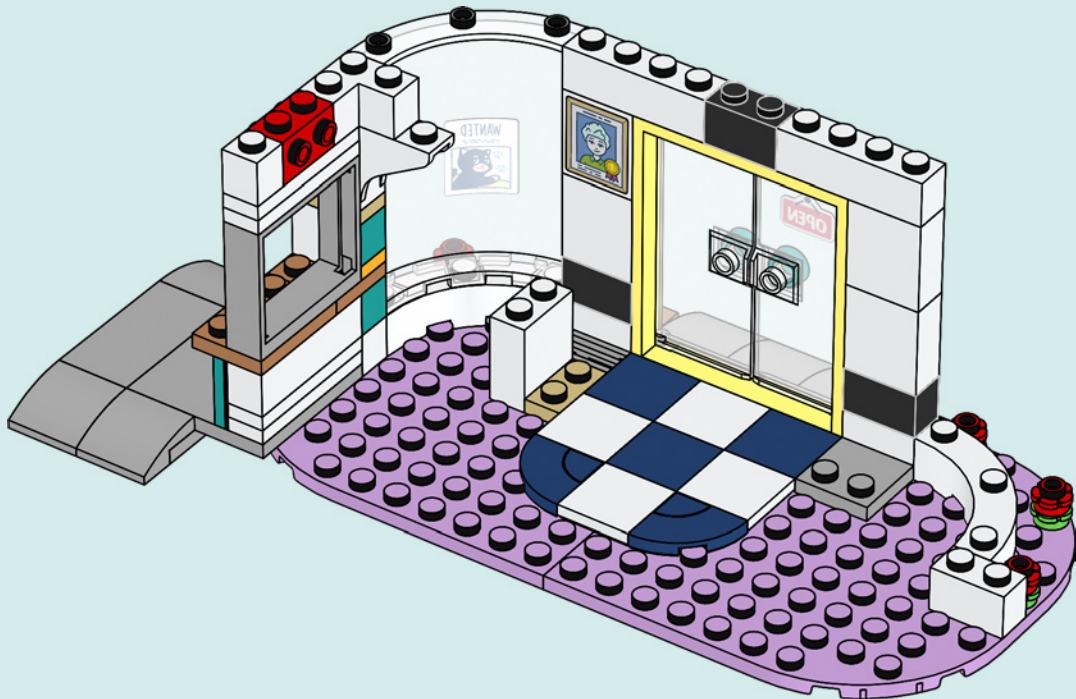


1x



1x

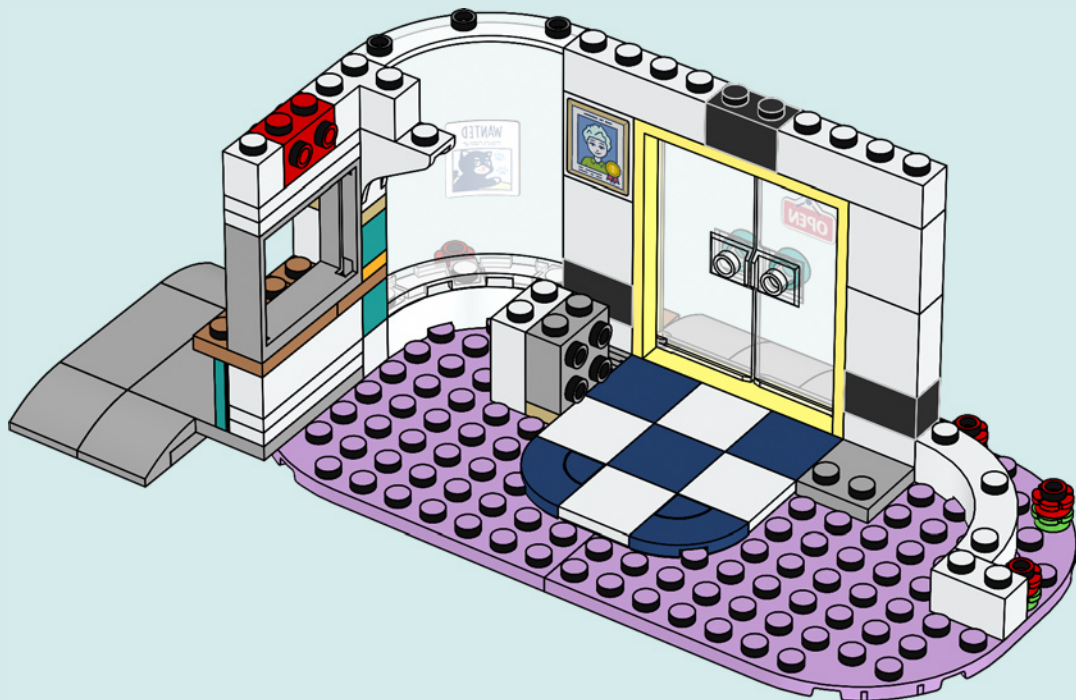
30

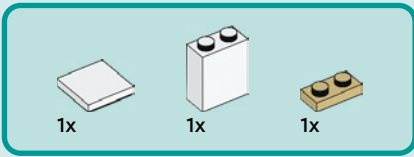




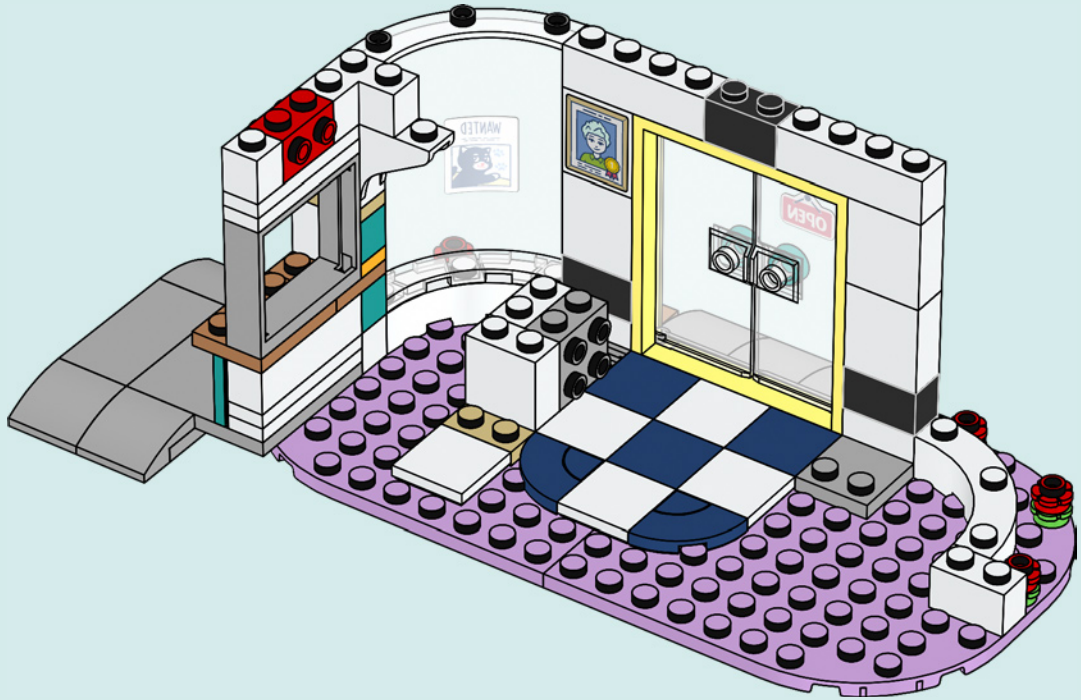
1x

31





32



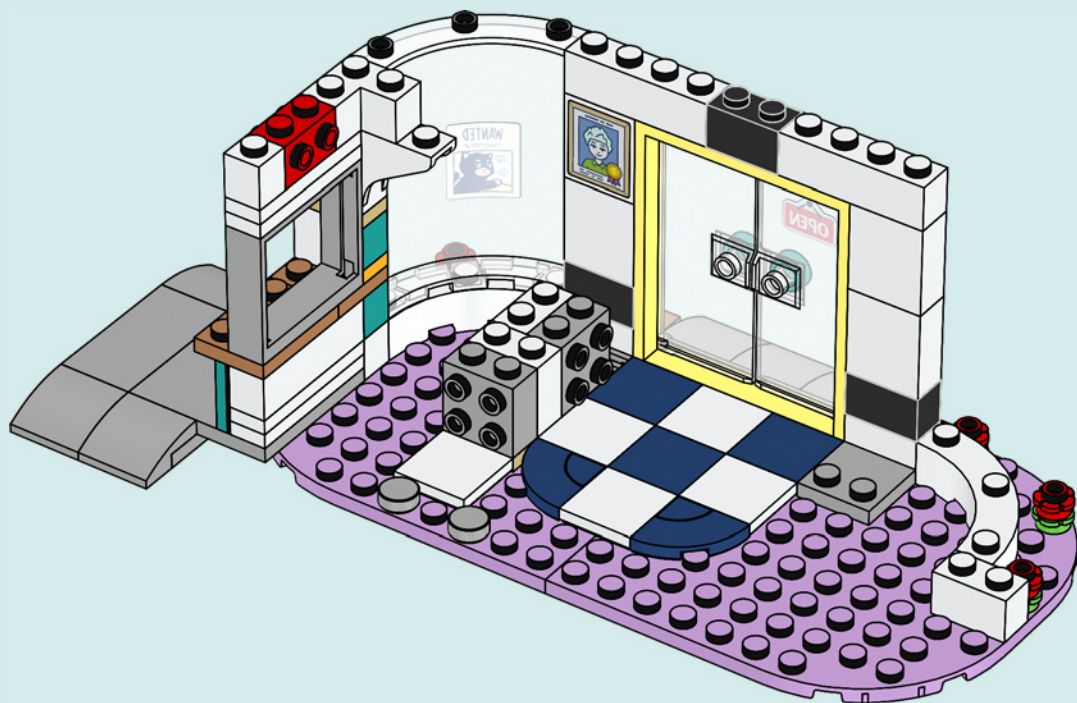


1x



2x

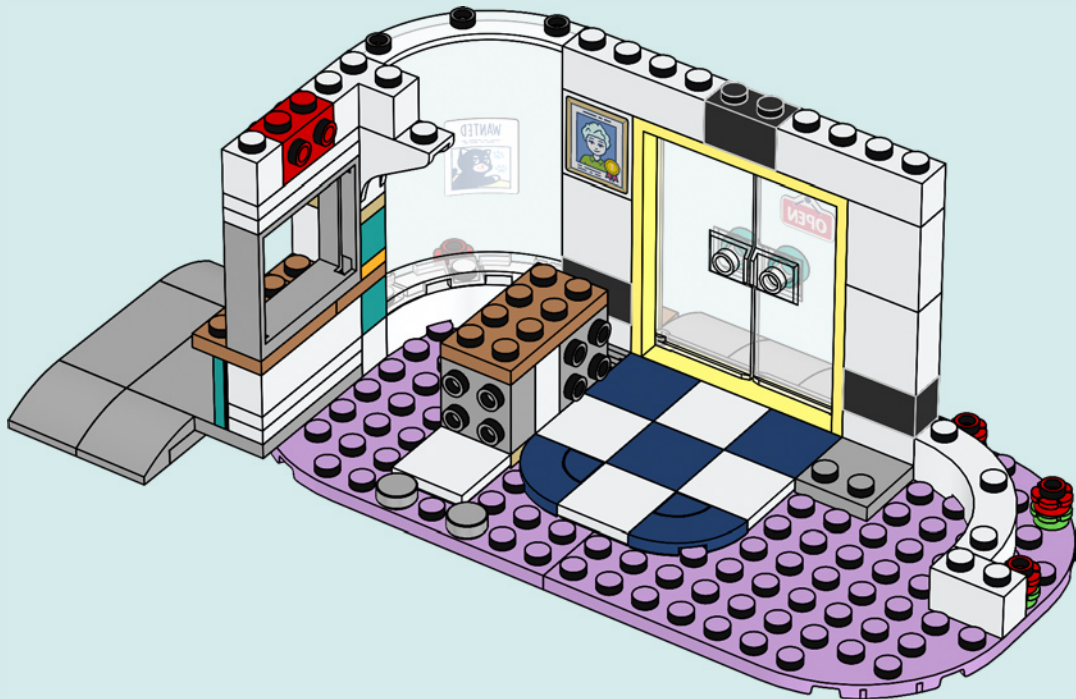
33

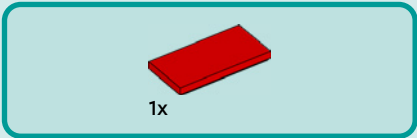




1x

34





35

